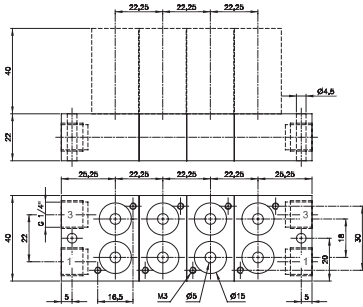
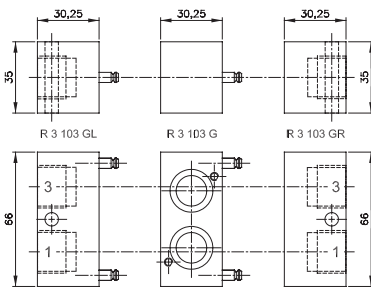


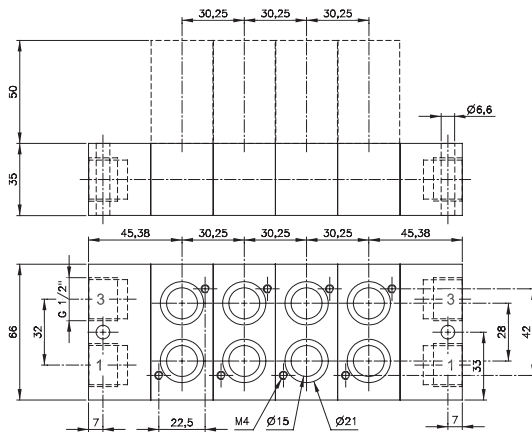
Parts of modular manifold RB 3__ 503 G



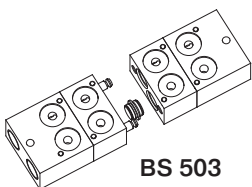
RB 3__ 503 G



Parts of modular manifold RB 3__ 103 G

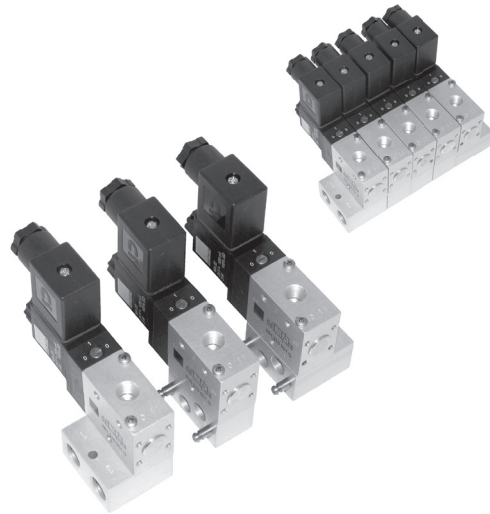


RB 3__ 103 G



BS 503

By adding a special plug (type BS 503), two different pressures can be attached at the same manifold plate. The plug is intercepting the air-supply in the manifold plate wherever the customer likes to.



Modular manifold system for common connections to ports 1 (pressure) and 3 (exhaust). The system can be built and taken apart just by operating two hexagon socket screws. Additional stations can be added at any position and any time. End-plates are equipped with threads for adding DIN-rail mounting clips.

The following valves can be assembled to the system **RB 3__ 503 G**:

- 3/2 single sol. n.c. G 1/8" MH 310 501 G page 2.5.1.1.12
- 3/2 single sol. n.o. G 1/8" MOH 310 501 G page 2.5.1.1.12
- 3/2 double sol. G 1/8" MH 320 501 G page 2.5.1.1.16

The system consists of:

- End-plate right type R 3 503 GR
- End-plate left type R 3 503 GL
- Individual position type R 3 503 G

Blanking plates are also available type BP 3 503.

The following valves can be assembled to the system **RB 3__ 103 G**:

- 3/2 single sol. n.c. G 3/8" MH 310 101 G page 2.5.1.1.13
- 3/2 single sol. n.o. G 3/8" MOH 310 101 G page 2.5.1.1.13
- 3/2 double sol. G 3/8" MH 320 101 G page 2.5.1.1.16

The system consists of:

- End-plate right type R 3 103 GR
- End-plate left type R 3 103 GL
- Individual position type R 3 103 G

Blanking plates are also available type BP 3 103.

Attention:

End-plates of series 103 G are not offering an individual valve-position.

The plates can also be ordered assembled by the manufacturer. In this case order RB 3__ 503 G (1/8") or RB 3__ 103 G (3/8"). Please add two digits for the number of positions required.

Type	Function	Weight
R 3 503 GR	End-plate right	0,07 kg
R 3 503 GL	End-plate left	0,07 kg
R 3 503 G	Individual position	0,05 kg

Type	Function	Weight
R 3 103 GR	End-plate right	0,14 kg
R 3 103 GL	End-plate left	0,15 kg
R 3 103 G	Individual position	0,12 kg